

EUROCUP WOMEN

LOGO ON PLAYING UNIFORMS

JULY 2023

BASIC PRINCIPLES

Guide for the application of the logo on the playing shirts of the EuroCup Women clubs. The basic principles of size, colour-use and clear area will be explained.

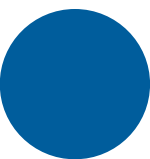
GENERAL RULES


The symbol of the EuroCup Women logo must appear on the front on the right side (facing the shirt). The symbol must not be modified.

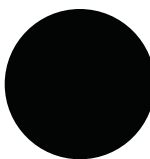
COLOUR SPECIFICATIONS

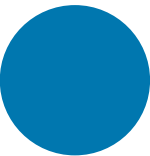
The symbol on the uniform is the flat version of the logo with white shield.

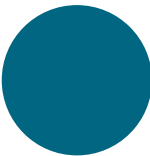
The symbol on uniforms is made of 6 colors:

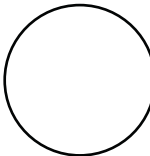
**ECW 2**
R 0 G 96 B 255
C 100 M 50 Y 0 K 20

**ECW 6**
R 231 G 74 B 91
C 0 M 84 Y 60 K 0

**BLACK**
R 0 G 0 B 0
C 0 M 0 Y 0 K 100

**ECW 4**
R 0 G 115 B 171
C 100 M 30 Y 5 K 15

**ECW 3**
R 0 G 90 B 154
C 95 M 15 Y 15 K 43

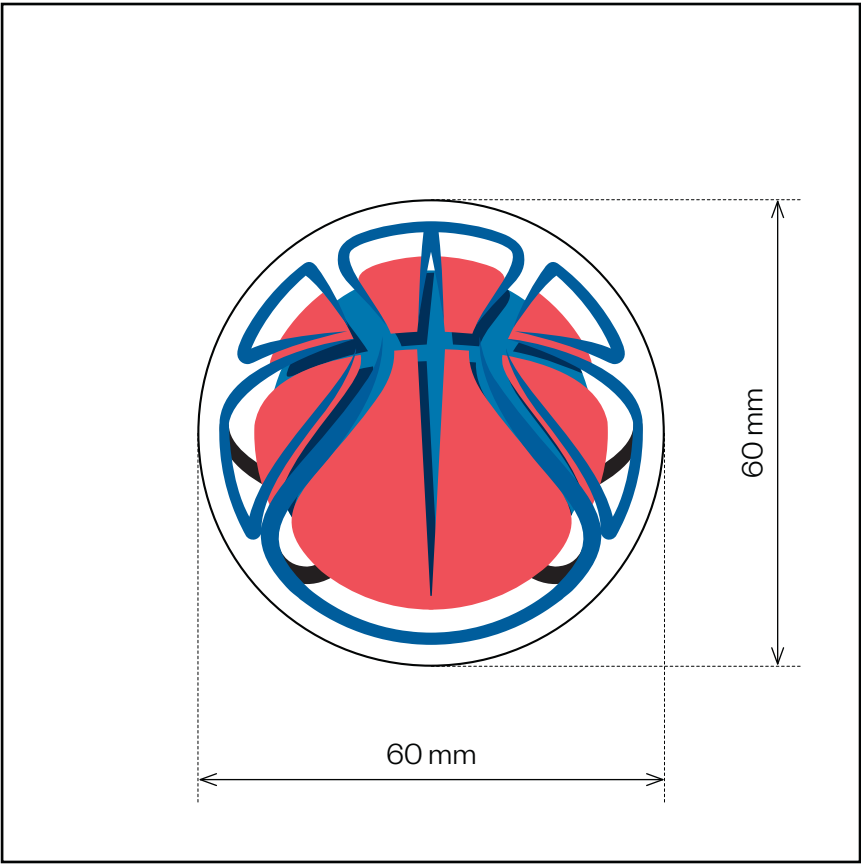
**WHITE**
R 255 G 255 B 255
C 0 M 0 Y 0 K 0



SIZE AND CLEAR SPACE

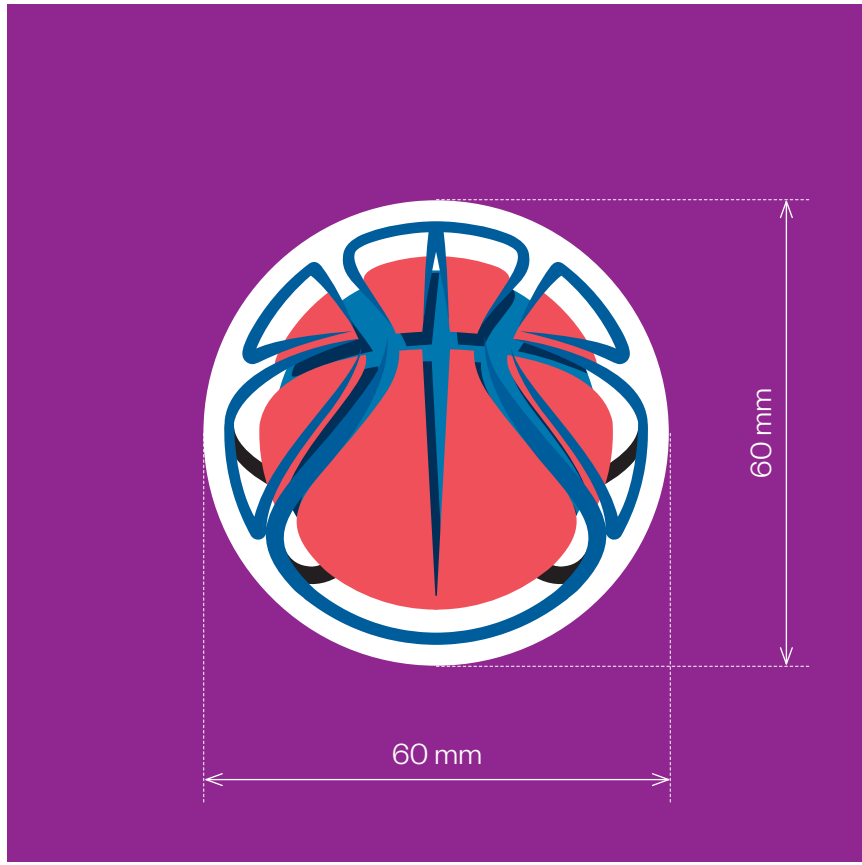
SIZE

Light Background



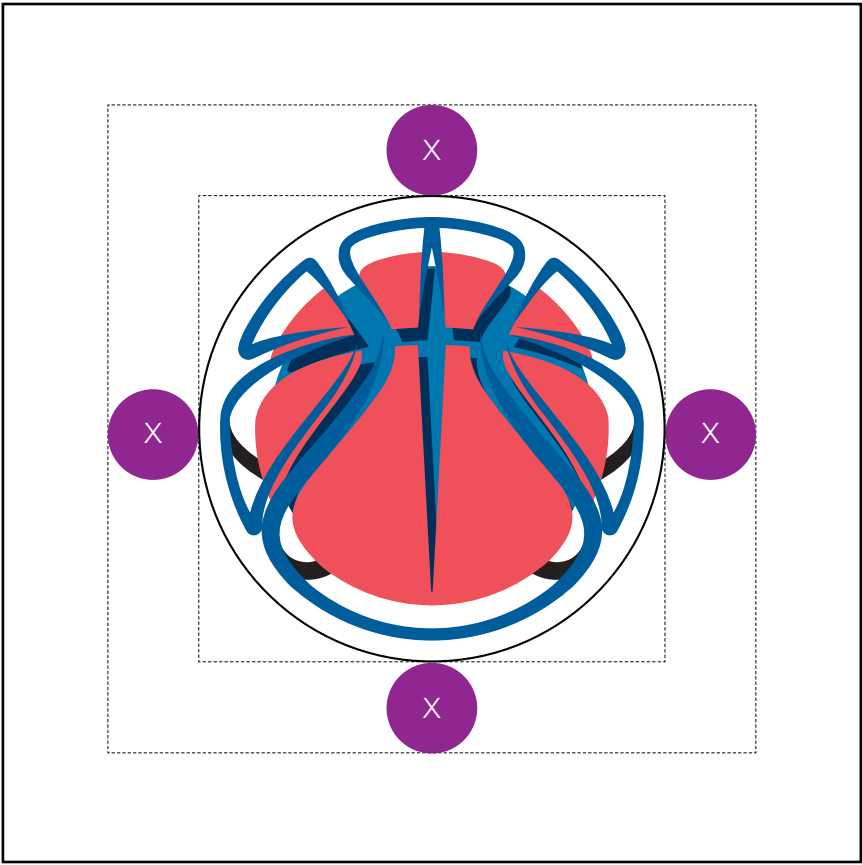
SIZE

Dark Background



CLEAR SPACE

Light Background



CLEAR SPACE

Dark Background

